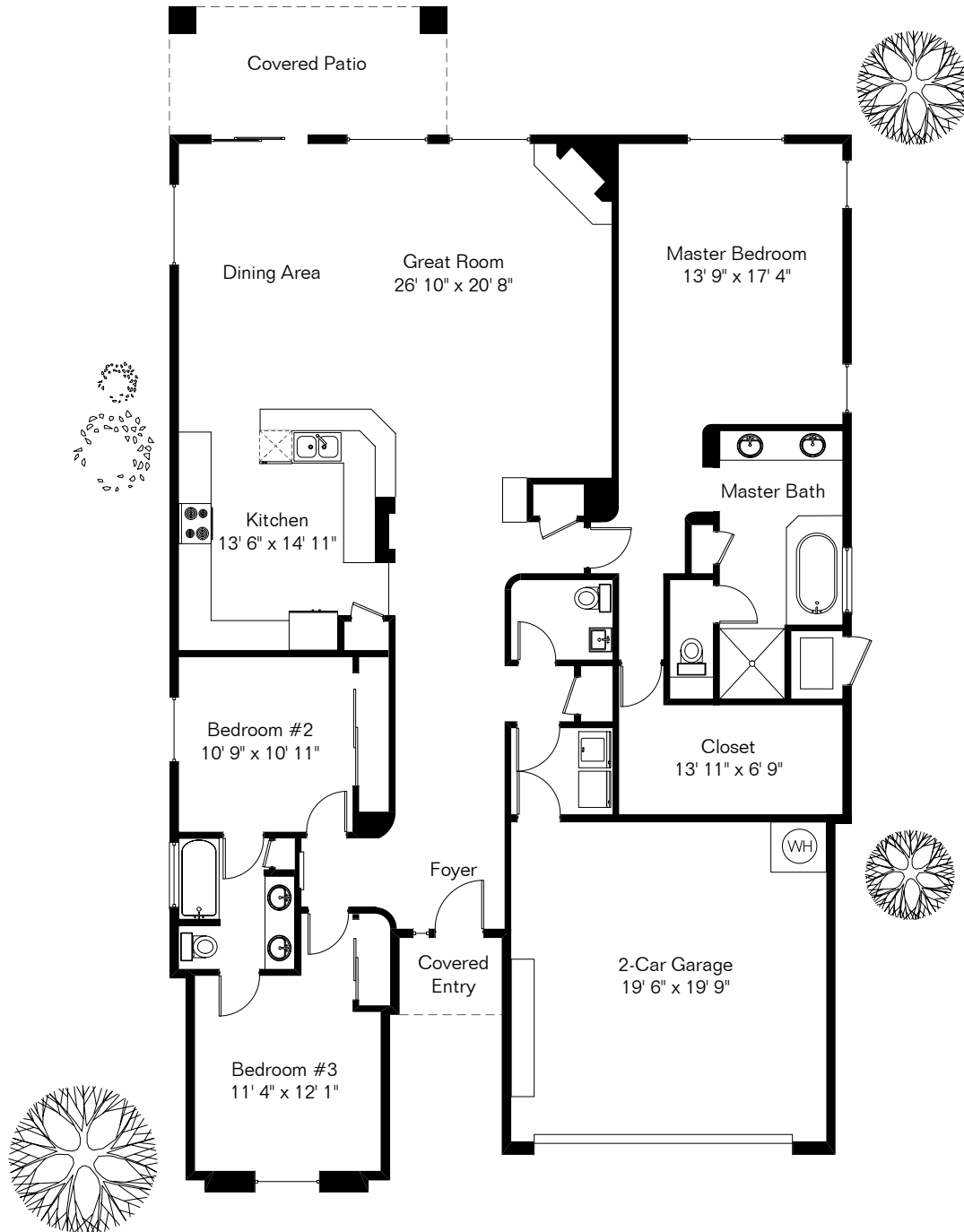
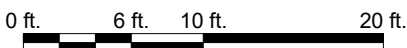


The square footages and room size information are deemed to be reliable but are not guaranteed and should be independently verified. This drawing is for marketing purposes only.

6202 N Via Paloma Rosa



Site Visit May 2022



Living Area 2,118 Sq Ft
Garage 421 Sq Ft

Copyright 2022 Floor Plans First! LLC
All Rights Reserved.

Floor Plans First!
See the Floor Plan First™

FloorPlansFirst.com™
(520) 881-1500